

Village of **Waynesville**

PLANNING COMMISSION AGENDA

Tuesday, November 15, 2022 – 7:00 pm
1400 Lytle Road

- I. Call to Order
- II. Roll Call
- III. Disposition of Minutes of Previous Meetings
 - a. Minutes of November 23, 2021
 - b. Minutes of March 1, 2022 – Not Provided
- IV. Old Business
- V. New Business
 - a. Review of proposed property at the corner of Route 42 and North St
- VI. Next Planning Commission Meeting
- VII. Adjourn

Notes from 11-23-21 Planning Commission meeting:

Roll call, all present.

Approval of notes from the 12-9-20 meeting. Motion by Mike L. 2nd by Bob B. Roll call, all approved.

Mike Morley, 2740 Corwin Rd., Oregonia, OH 45054. Discussed lot split. Nothing to approve.

John McKinley, 351 Somerset Ln., Waynesville, OH 45068. Discussed lot split with Haley-dusa group. Motion by Chad B. 2nd by Connie M. Roll call, all approved.

Jeff Richards, 401 Wilkerson Ln. Waynesville, OH 45068. Discussed lot split on Lemay property. Motion by Zach G. 2nd by Travis H. Roll call, all approved.

Adjourn 7:47 PM

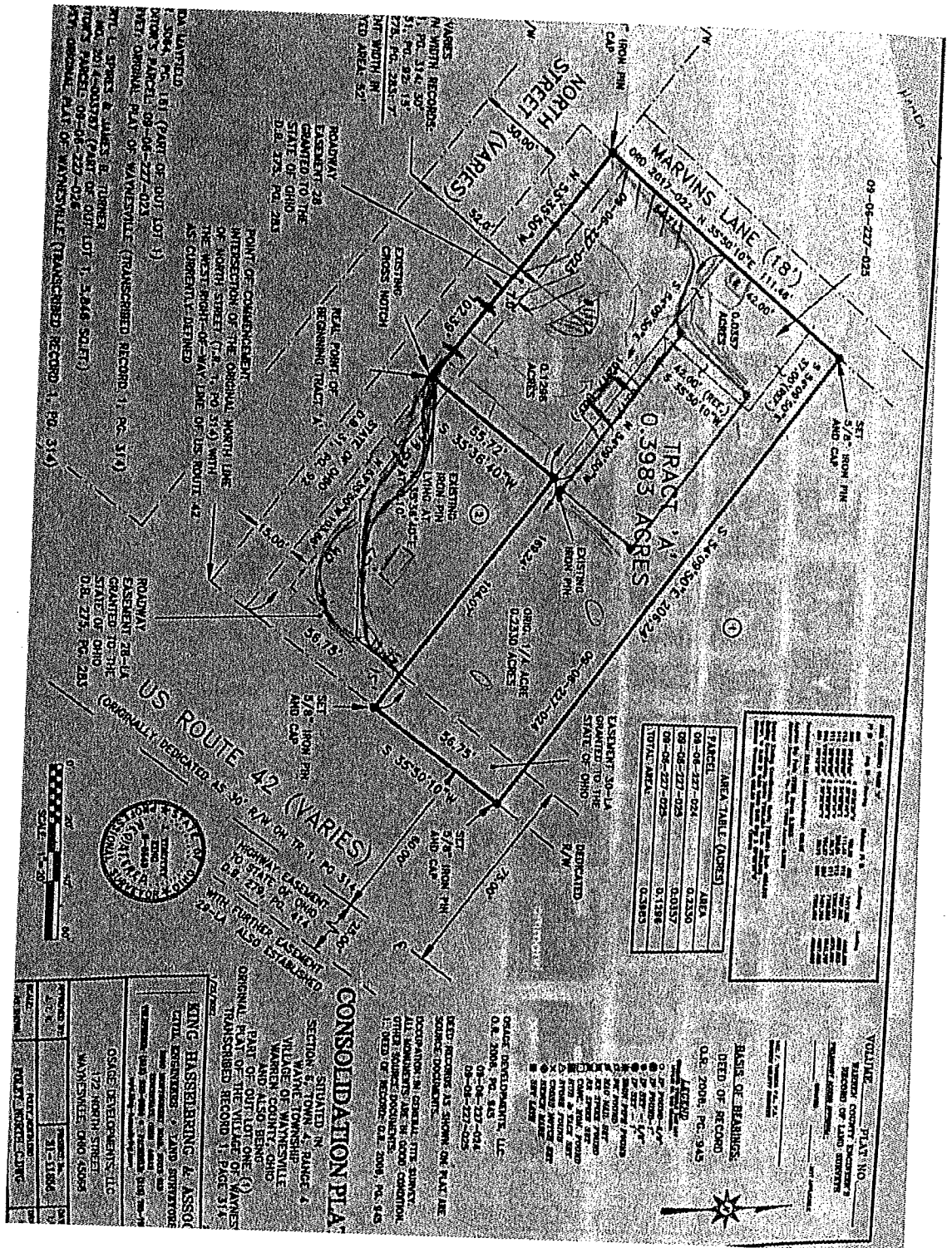


TABLE OF AREAS

AREA	AREA (ACRES)	AREA
04-06-227-024	0.21350	
09-06-227-025	0.0357	
09-06-227-025	0.1398	
TOTAL AREA	0.3983	

AREA TABLE (ACRES)

PARCEL	AREA
04-06-227-024	0.21350
09-06-227-025	0.0357
09-06-227-025	0.1398
TOTAL AREA	0.3983

VOLUME PLAT NO.
 BASED ON COUNTY RECORDS
 RECORD OF LAND SURVEYS
 WASHINGTON COUNTY, OHIO

DATE OF RECORD
 OR. 2008, PG. 943

AGREED
 I, [Name], of the County of [County], State of Ohio, do hereby certify that the above is a true and correct copy of the original record of the above described land as the same appears in the records of the County of [County], State of Ohio, and that the same is a true and correct copy of the original record of the above described land as the same appears in the records of the County of [County], State of Ohio.

CONSOLIDATION PLAN
 SITUATED IN [County] COUNTY, OHIO
 SECTION [Section], TOWNSHIP [Township], RANGE [Range]
 VILLAGE OF WAYNESVILLE
 WASHINGTON COUNTY, OHIO
 AND ALSO BEING
 PART OF OUT LOT ONE (1)
 ORIGINAL PART OF THE VILLAGE OF WAYNESVILLE
 TRANSCRIBED RECORD 1, PG. 314

PLAT DEVELOPER, LLC
 127 NORTH STREET
 WAYNESVILLE, OHIO 45399

OSAGE DEVELOPMENTS, LLC
 127 NORTH STREET
 WAYNESVILLE, OHIO 45399

KING, HANSELBERG & ASSOCIATES
 127 NORTH STREET
 WAYNESVILLE, OHIO 45399



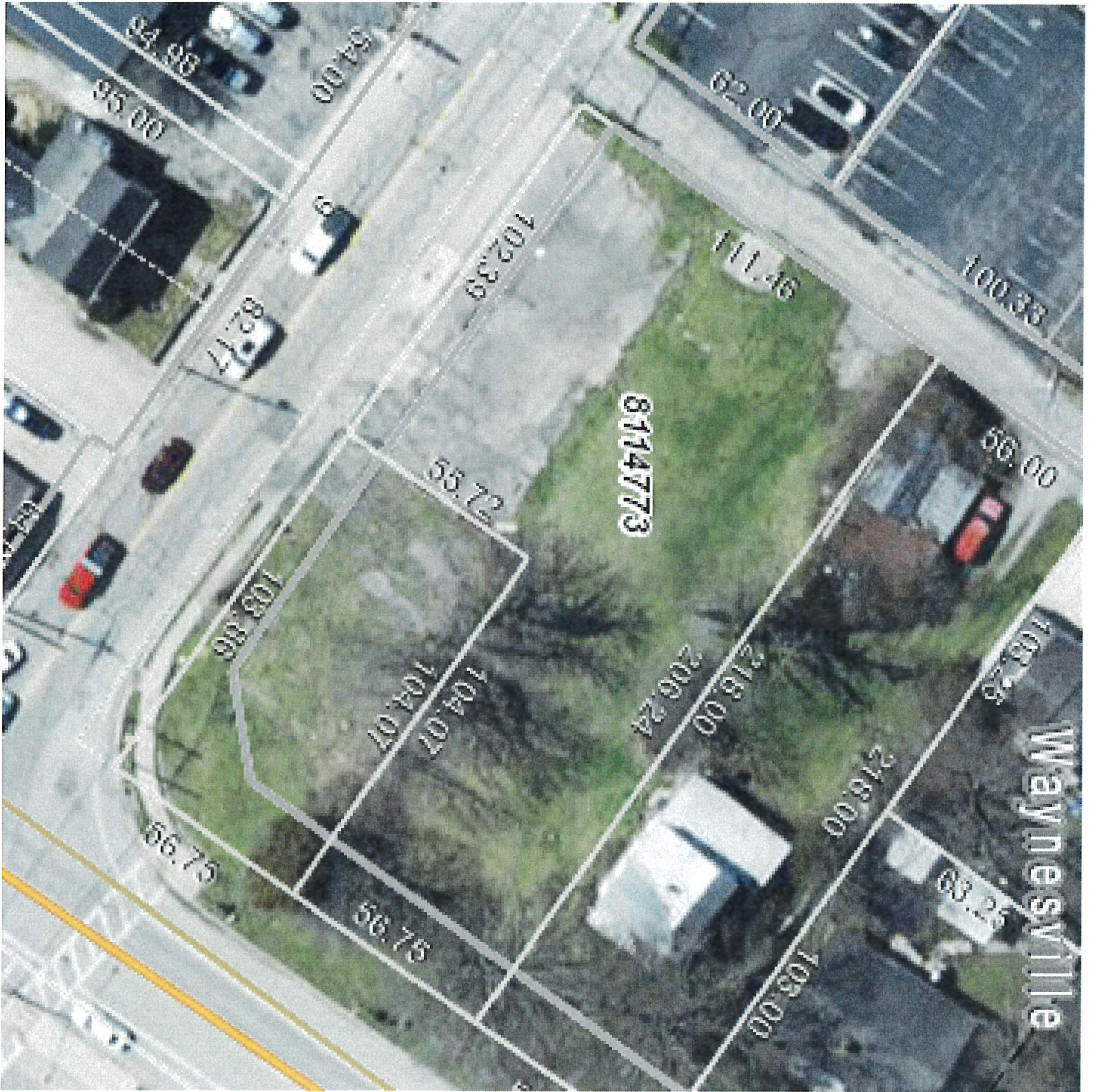
US ROUTE 42 (VARIES)
 GENERALLY LOCATED 15-30' W. OF THE 1/2 SECTION LINE

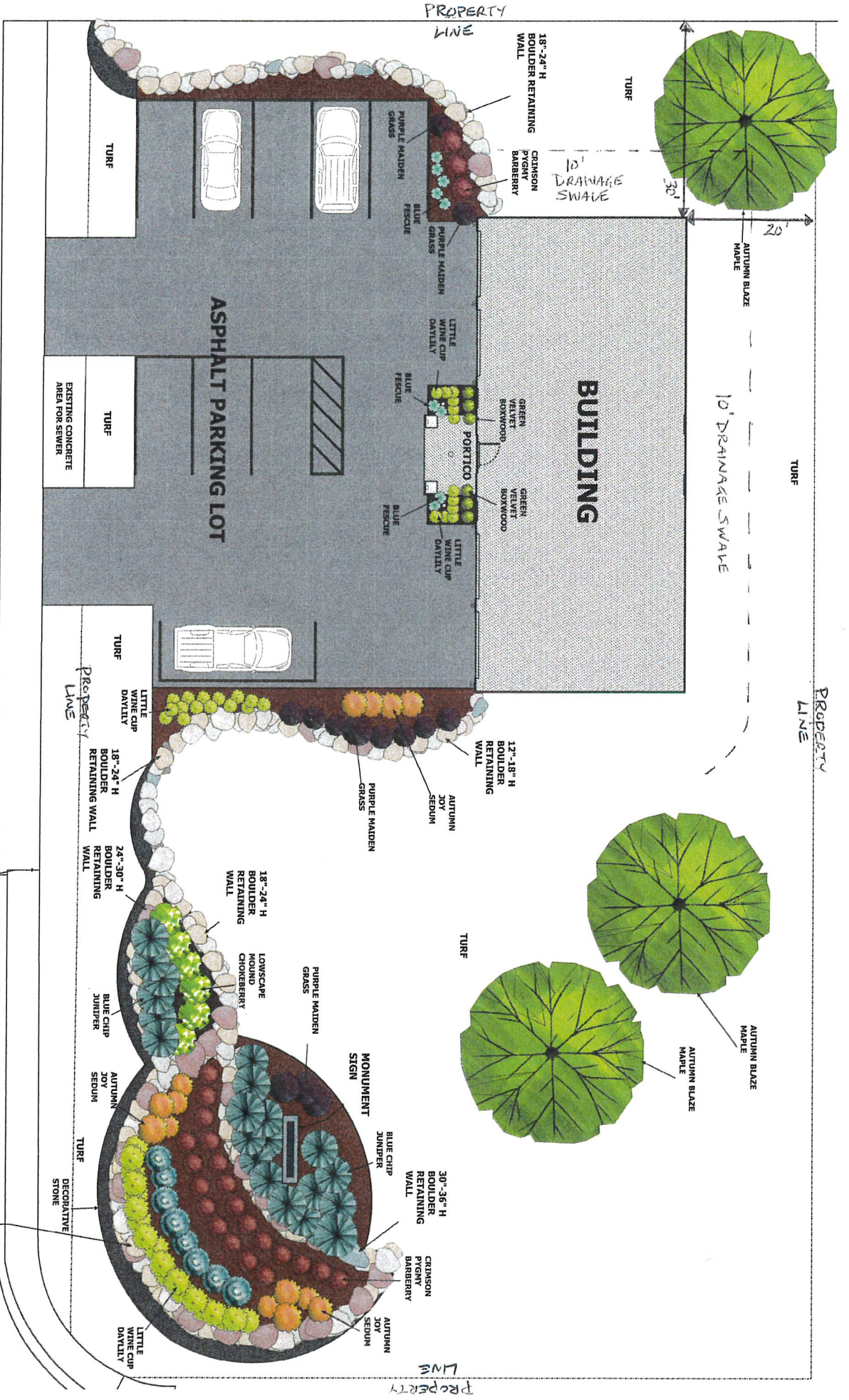
ROADWAY EXEMPT 2B-LA
 EXEMPT TO THE STATE OF OHIO
 O.R. 275, PG. 213

EXISTING 1/4 ACRE
 EXISTING 1/2 ACRE
 EXISTING 3/4 ACRE

EXISTING 1/4 ACRE
 EXISTING 1/2 ACRE
 EXISTING 3/4 ACRE

EXISTING 1/4 ACRE
 EXISTING 1/2 ACRE
 EXISTING 3/4 ACRE





EAGLE EYE HOME INSPECTIONS
172 NORTH STREET
WAYNESVILLE, OHIO 45068



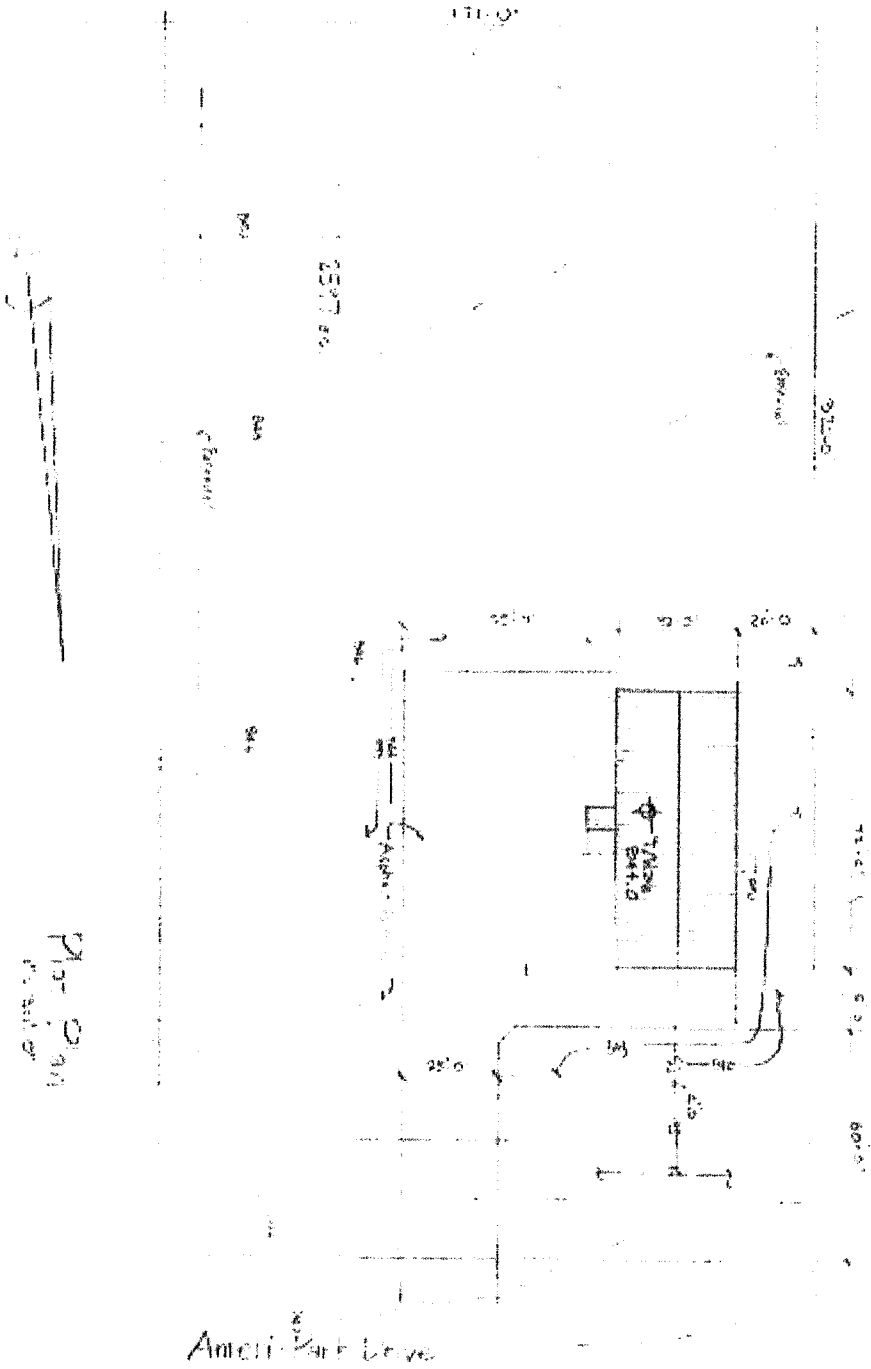
368 W LIBERTY STREET
WAUCONDA, IL 60084
847-526-5244
 OWNER—KEITH APPELHANS
 DESIGNER—MONIQUE HAMILTON
 COPYRIGHT 2022—APPLE LANDSCAPING, LTD

36'-42" H
BOULDER RETAINING WALL
 Note: Replaces existing failing block retaining wall and is set back farther from sidewalk for pedestrian safety/visibility

Scale: 1/20" = 1 ft.







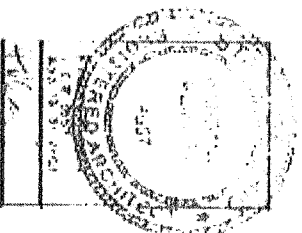
Plot 2
100' x 100'

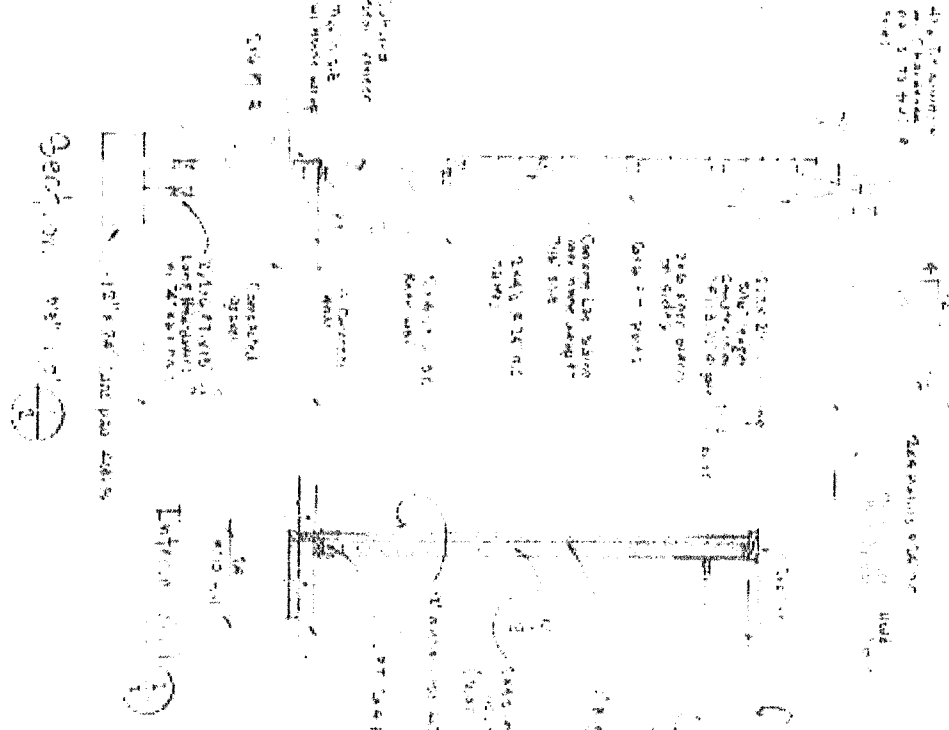
Amesbury Park Drive



Proposed Building for
Eagle Eye Home Inspection/
Storage Warehouse

Randall P. Wood, architect
2810 Park Street
Haverhill, Mass. 01830
508-351-4444





Section 100' x 100' steel pipe column
 2x10 floor joists
 2x6 roof joists
 100' x 100' steel pipe column
 2x10 floor joists
 2x6 roof joists

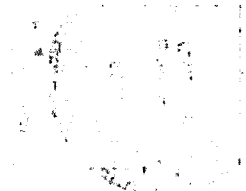


Project Location
 100' x 100' steel pipe column
 2x10 floor joists
 2x6 roof joists
 100' x 100' steel pipe column
 2x10 floor joists
 2x6 roof joists

2

Proposed building for
 100' x 100' steel pipe column
 2x10 floor joists
 2x6 roof joists

100' x 100' steel pipe column
 2x10 floor joists
 2x6 roof joists



Ceiling & Wall @ Handicap Toilet Room

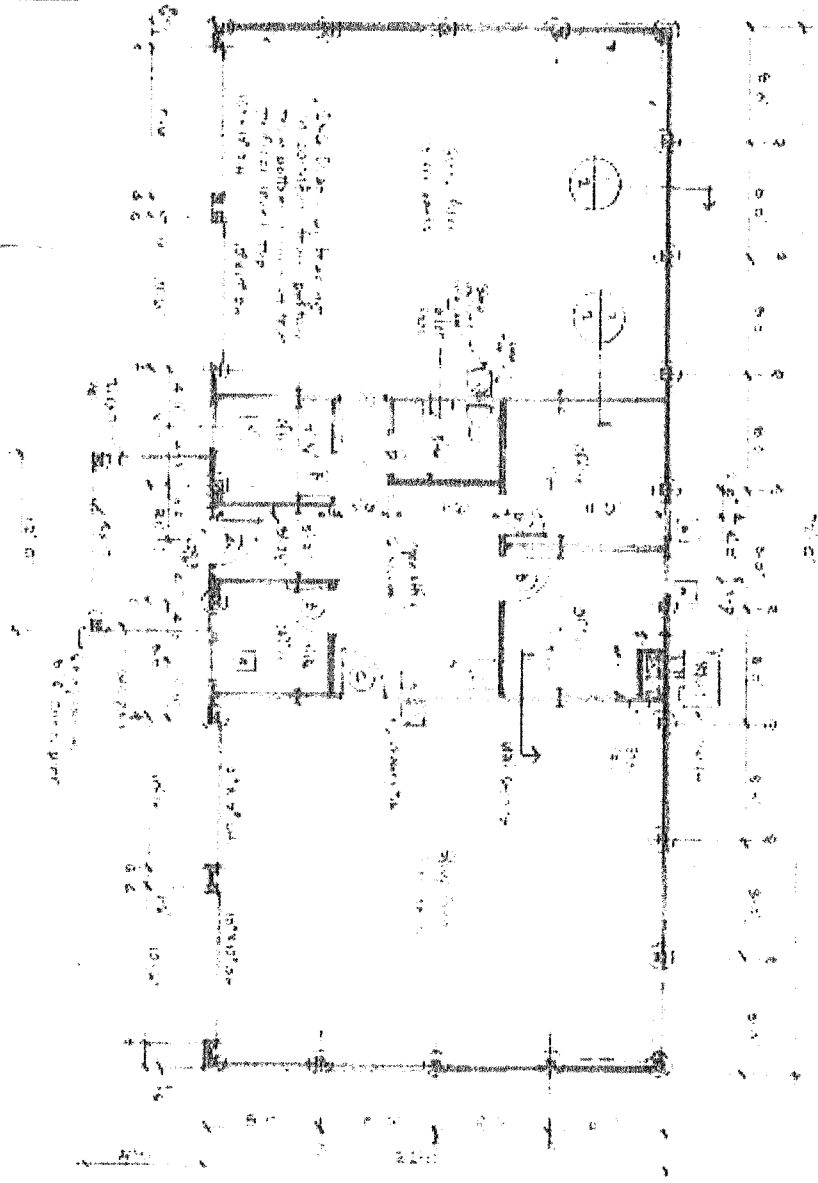
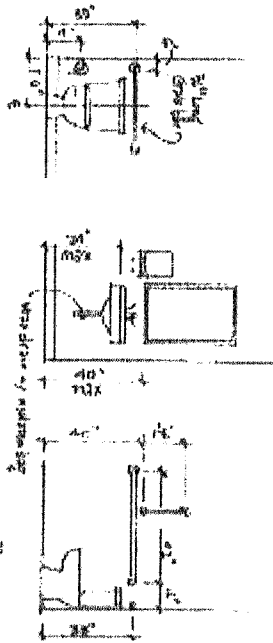
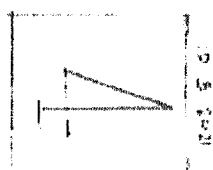
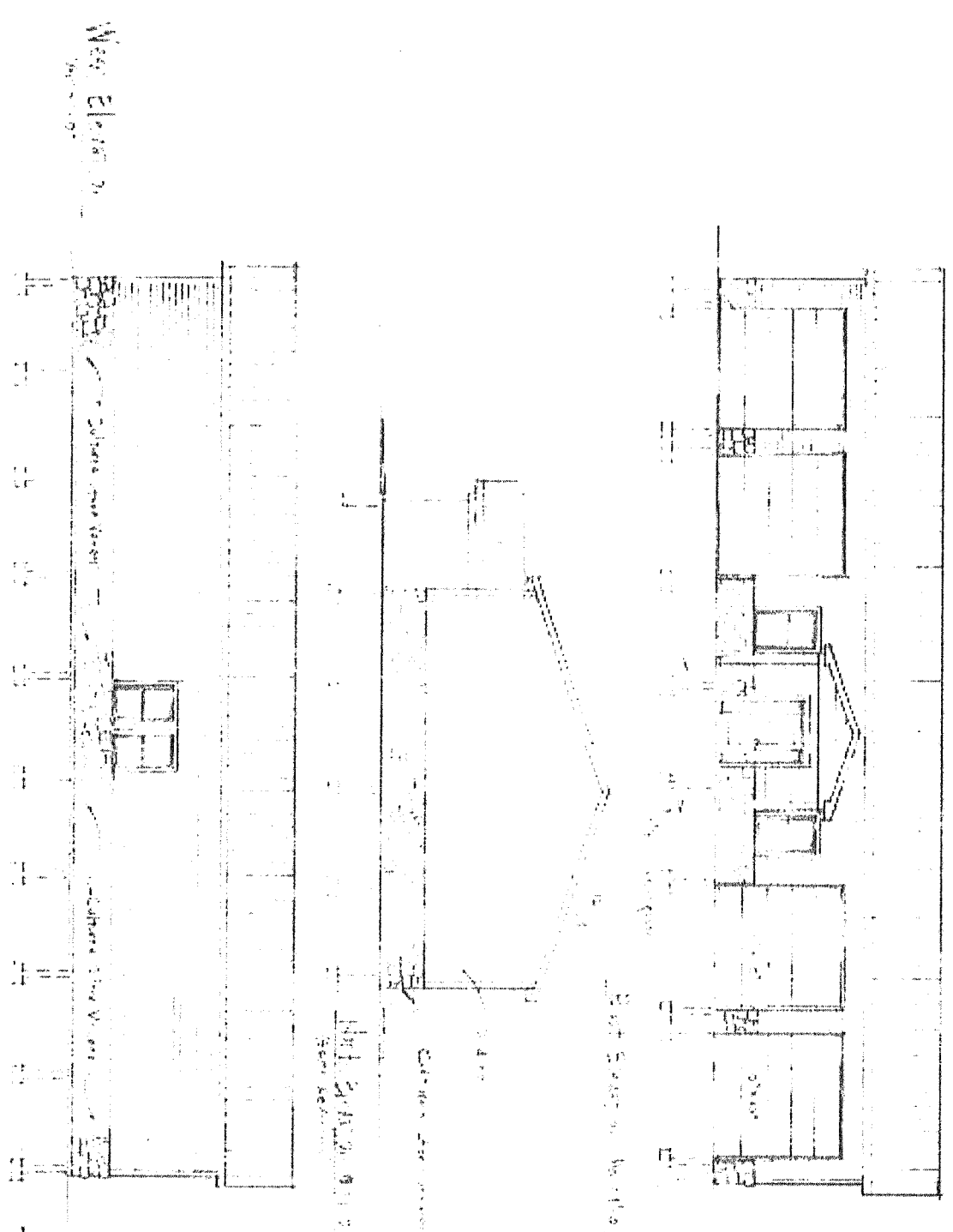


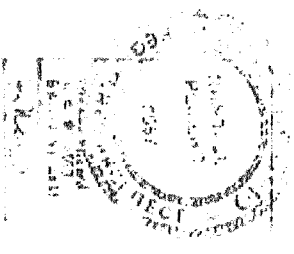
Figure 1.1 - 10'0\"/>

	0 5 2021	Project Name: Site by: Scale:	Royal PIZ 1 and 2 250 sq. ft. Level: 2nd floor 10'0" x 10'0"	
	RANDALL R. HENNING LICENSED PROFESSIONAL ENGINEER - FLORIDA License No. 10000			



Proposed Building
 Engle Eye from top
 Street front

Randall P. Kent, architect
 2870 Harris Place
 Newark 4 Ohio 45242
 513-267-3544

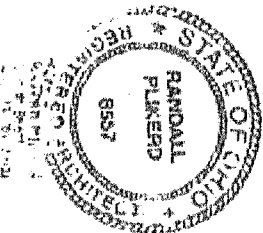
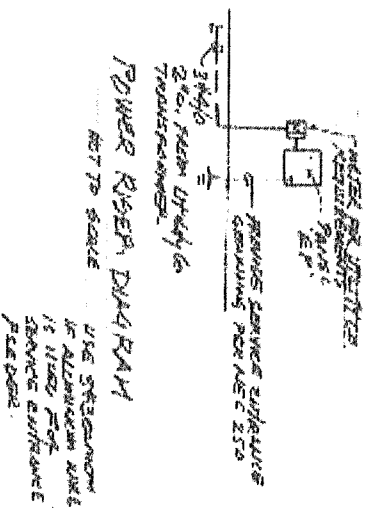


LOCATION: SEE PLAN
 TYPE: GROUND SWM EQUIP
 TYPE OF WORK: 215' x 41' 25" RAINW BARR
 SHEET: 3 OF 410 / 16119 2"

NOTE: 120/140 VOLT 1 PH 1/2 IN
 AC PARTIAL: _____
 GROUND BUS: 50-50A
 MOUNTING: SUNSHADE
 ETD FROM: UTILITY CO. WENT

NO	SYMBOL	DESCRIPTION	AREA		UNIT	QTY	PRICE	TOTAL
			sq ft	sq in				
1	170	170 RAINW BARR	170	215	1	170	170	
2	170	170 RAINW BARR	170	215	1	170	170	
3	170	170 RAINW BARR	170	215	1	170	170	
4	170	170 RAINW BARR	170	215	1	170	170	
5	170	170 RAINW BARR	170	215	1	170	170	
6	170	170 RAINW BARR	170	215	1	170	170	
7	170	170 RAINW BARR	170	215	1	170	170	
8	170	170 RAINW BARR	170	215	1	170	170	
9	170	170 RAINW BARR	170	215	1	170	170	
10	170	170 RAINW BARR	170	215	1	170	170	
11	170	170 RAINW BARR	170	215	1	170	170	
12	170	170 RAINW BARR	170	215	1	170	170	
13	170	170 RAINW BARR	170	215	1	170	170	
14	170	170 RAINW BARR	170	215	1	170	170	
15	170	170 RAINW BARR	170	215	1	170	170	
16	170	170 RAINW BARR	170	215	1	170	170	
17	170	170 RAINW BARR	170	215	1	170	170	
18	170	170 RAINW BARR	170	215	1	170	170	
19	170	170 RAINW BARR	170	215	1	170	170	
20	170	170 RAINW BARR	170	215	1	170	170	
21	170	170 RAINW BARR	170	215	1	170	170	
22	170	170 RAINW BARR	170	215	1	170	170	
23	170	170 RAINW BARR	170	215	1	170	170	
24	170	170 RAINW BARR	170	215	1	170	170	
25	170	170 RAINW BARR	170	215	1	170	170	
26	170	170 RAINW BARR	170	215	1	170	170	
27	170	170 RAINW BARR	170	215	1	170	170	
28	170	170 RAINW BARR	170	215	1	170	170	
29	170	170 RAINW BARR	170	215	1	170	170	
30	170	170 RAINW BARR	170	215	1	170	170	
31	170	170 RAINW BARR	170	215	1	170	170	
32	170	170 RAINW BARR	170	215	1	170	170	
33	170	170 RAINW BARR	170	215	1	170	170	
34	170	170 RAINW BARR	170	215	1	170	170	
35	170	170 RAINW BARR	170	215	1	170	170	
36	170	170 RAINW BARR	170	215	1	170	170	
37	170	170 RAINW BARR	170	215	1	170	170	
38	170	170 RAINW BARR	170	215	1	170	170	
39	170	170 RAINW BARR	170	215	1	170	170	
40	170	170 RAINW BARR	170	215	1	170	170	
41	170	170 RAINW BARR	170	215	1	170	170	

NOTE: 170 RAINW BARR TO BE USED FOR ALL RAINW BARRS

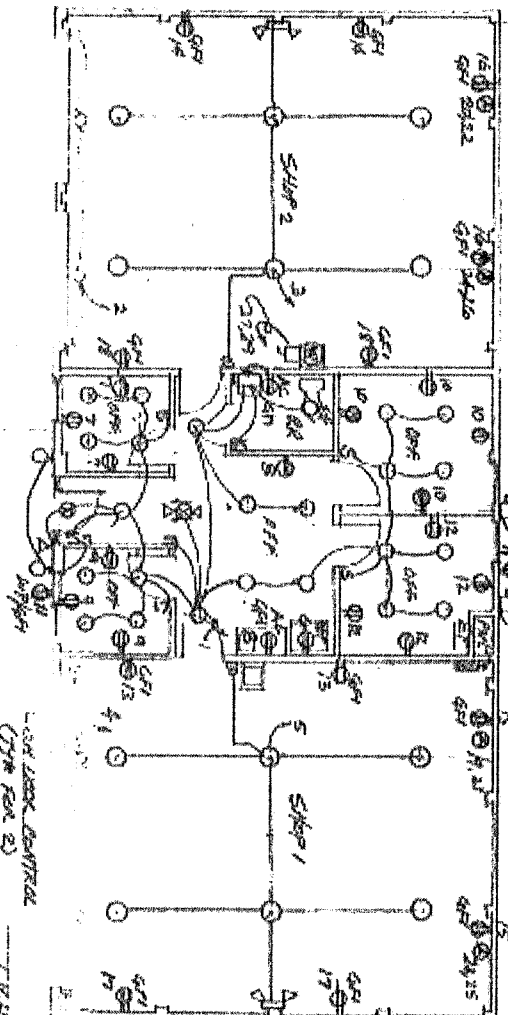


Prepared by: Karl P. Kiehl, Inc.
 3950 E. 12th St.
 Cleveland, Ohio 44115
 Tel: 201-354-4

Prepared by: Boyle & Hume Inspectors
 3100 Main St.
 Cleveland, Ohio 44115

E-2

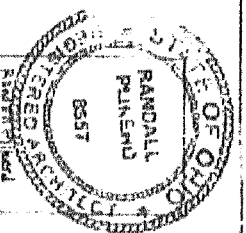
10-29-2011



- NOTES:**
1. YOU DURING DRIVE BE NEW AND IMPROVED NER-CITEST EDITHAL OF THE NATIONAL ELECTRICAL CODE.
 2. ALL ELECTRICAL DISTRICTS SHALL BE NEW.
 3. SEE PANEL SCHEDULE AND PANEL COVER SCHEDULE ON DRAWING E2.

WIRING LEGEND

- FLUSH MOUNTED 6" ROUND LED LIGHTS AS SHOWN
- W/ BAY LED LIGHTS AS SHOWN
- LED RECESSED TRUCKER (BY QUOTE)
- RECESSED LED TYPE AS SHOWN
- W/ BAY LED LIGHTS AS SHOWN
- RECESSED LED TYPE AS SHOWN



Randall Plinkard, architect
 2870 Harris Place
 Newark, Ohio 45252
 513-301-3544

Proposed Building for
 Eagle Eye Home Inspections/
 Shawn Hamilton

08/2021

OF 2

THE PROJECT

1. SPECIALTY WORK PROGRAM
2. 24,000 sq ft
3. 24,000 sq ft
4. 24,000 sq ft
5. 24,000 sq ft
6. 24,000 sq ft
7. 24,000 sq ft
8. 24,000 sq ft
9. 24,000 sq ft
10. 24,000 sq ft

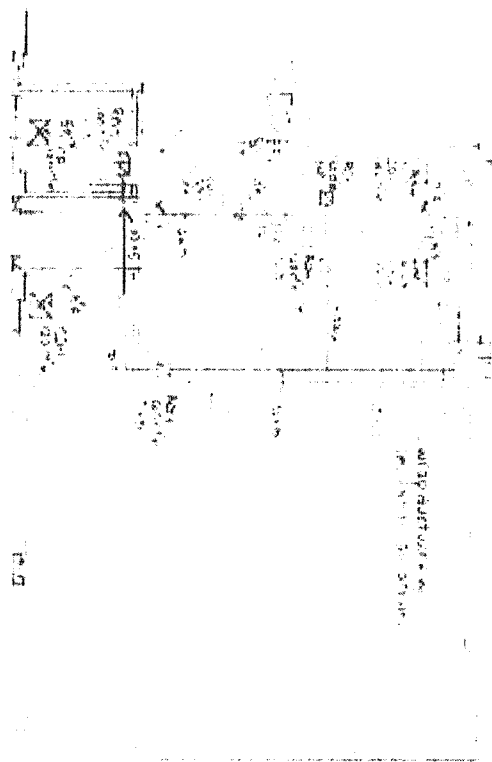
REVISIONS

1. 24,000 sq ft
2. 24,000 sq ft
3. 24,000 sq ft
4. 24,000 sq ft
5. 24,000 sq ft
6. 24,000 sq ft
7. 24,000 sq ft
8. 24,000 sq ft
9. 24,000 sq ft
10. 24,000 sq ft

NO.	DATE	DESCRIPTION
1	10/1/71	ISSUED FOR PERMIT
2	10/1/71	ISSUED FOR PERMIT
3	10/1/71	ISSUED FOR PERMIT
4	10/1/71	ISSUED FOR PERMIT
5	10/1/71	ISSUED FOR PERMIT
6	10/1/71	ISSUED FOR PERMIT
7	10/1/71	ISSUED FOR PERMIT
8	10/1/71	ISSUED FOR PERMIT
9	10/1/71	ISSUED FOR PERMIT
10	10/1/71	ISSUED FOR PERMIT

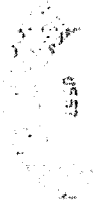
- 1. 24,000 sq ft
- 2. 24,000 sq ft
- 3. 24,000 sq ft
- 4. 24,000 sq ft
- 5. 24,000 sq ft
- 6. 24,000 sq ft
- 7. 24,000 sq ft
- 8. 24,000 sq ft
- 9. 24,000 sq ft
- 10. 24,000 sq ft

- 1. 24,000 sq ft
- 2. 24,000 sq ft
- 3. 24,000 sq ft
- 4. 24,000 sq ft
- 5. 24,000 sq ft
- 6. 24,000 sq ft
- 7. 24,000 sq ft
- 8. 24,000 sq ft
- 9. 24,000 sq ft
- 10. 24,000 sq ft



H/VAC PLAN

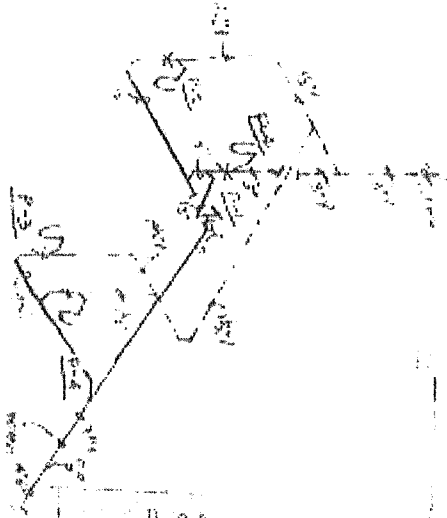
RECEIVED



Project 3000
Exhibition Building
Chicago, Illinois

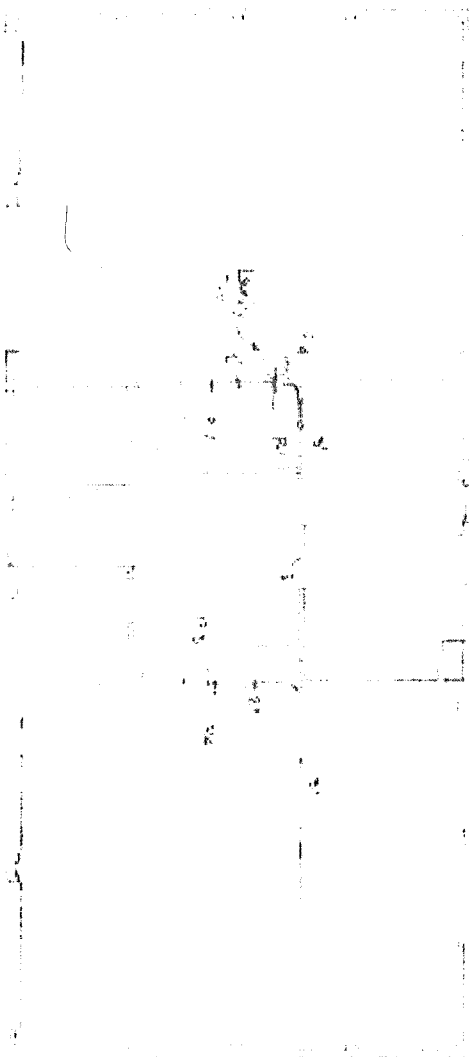
10/1/71





Handwritten notes: Check dimensions of all rooms. Note: 1/2" = 1'-0"

Room	Area	Notes
1	12' x 12'	1/2" = 1'-0"
2	12' x 12'	1/2" = 1'-0"
3	12' x 12'	1/2" = 1'-0"
4	12' x 12'	1/2" = 1'-0"
5	12' x 12'	1/2" = 1'-0"
6	12' x 12'	1/2" = 1'-0"
7	12' x 12'	1/2" = 1'-0"
8	12' x 12'	1/2" = 1'-0"
9	12' x 12'	1/2" = 1'-0"
10	12' x 12'	1/2" = 1'-0"
11	12' x 12'	1/2" = 1'-0"
12	12' x 12'	1/2" = 1'-0"
13	12' x 12'	1/2" = 1'-0"
14	12' x 12'	1/2" = 1'-0"
15	12' x 12'	1/2" = 1'-0"
16	12' x 12'	1/2" = 1'-0"
17	12' x 12'	1/2" = 1'-0"
18	12' x 12'	1/2" = 1'-0"
19	12' x 12'	1/2" = 1'-0"
20	12' x 12'	1/2" = 1'-0"
21	12' x 12'	1/2" = 1'-0"
22	12' x 12'	1/2" = 1'-0"
23	12' x 12'	1/2" = 1'-0"
24	12' x 12'	1/2" = 1'-0"
25	12' x 12'	1/2" = 1'-0"
26	12' x 12'	1/2" = 1'-0"
27	12' x 12'	1/2" = 1'-0"
28	12' x 12'	1/2" = 1'-0"
29	12' x 12'	1/2" = 1'-0"
30	12' x 12'	1/2" = 1'-0"
31	12' x 12'	1/2" = 1'-0"
32	12' x 12'	1/2" = 1'-0"
33	12' x 12'	1/2" = 1'-0"
34	12' x 12'	1/2" = 1'-0"
35	12' x 12'	1/2" = 1'-0"
36	12' x 12'	1/2" = 1'-0"
37	12' x 12'	1/2" = 1'-0"
38	12' x 12'	1/2" = 1'-0"
39	12' x 12'	1/2" = 1'-0"
40	12' x 12'	1/2" = 1'-0"
41	12' x 12'	1/2" = 1'-0"
42	12' x 12'	1/2" = 1'-0"
43	12' x 12'	1/2" = 1'-0"
44	12' x 12'	1/2" = 1'-0"
45	12' x 12'	1/2" = 1'-0"
46	12' x 12'	1/2" = 1'-0"
47	12' x 12'	1/2" = 1'-0"
48	12' x 12'	1/2" = 1'-0"
49	12' x 12'	1/2" = 1'-0"
50	12' x 12'	1/2" = 1'-0"
51	12' x 12'	1/2" = 1'-0"
52	12' x 12'	1/2" = 1'-0"
53	12' x 12'	1/2" = 1'-0"
54	12' x 12'	1/2" = 1'-0"
55	12' x 12'	1/2" = 1'-0"
56	12' x 12'	1/2" = 1'-0"
57	12' x 12'	1/2" = 1'-0"
58	12' x 12'	1/2" = 1'-0"
59	12' x 12'	1/2" = 1'-0"
60	12' x 12'	1/2" = 1'-0"



- Legend:
- - - - - Survey Lines
 - --- --- Foot Walls
 - 1 Year
 - NEAL THOMAS BLDG
 - CLEAR BAY
 - (- - -) FIRE ALARMS
 - PIPE AND DRAINAGE

Proposed Building for
 Boyle by H. H. [unclear]
 [unclear]

Randall P. Klerd, architect
 2370 [unclear]
 [unclear]
 [unclear]

